

AI Toolkit for HR

A central hub designed to equip HR practitioners with practical guidance, tools and learning to support responsible AI adoption.





AHRI's AI Toolkit

A central hub designed to support HR practitioners at all levels to:

- Understand AI risks and opportunities in workforce contexts
- Implement compliant and ethical AI practices
- Build organisational capability and governance
- Access AHRI's learning, tools and guidance.



AHRI Assist



Join AHRI to access these and other resources



AI Readiness Framework for HR Leaders

A structured diagnostic tool to assess organisational readiness across strategy, governance, risk, and capability.



This resource is exclusive to AHRI members



Embedding Responsible AI – HR Roadmap

Step-by-step implementation guide aligned to three phases: Ideation, Implementation, and Inspection.



This resource is exclusive to AHRI members



AI Policy Template (Responsible Use of AI in the Workplace)

A best-practice, legally reviewed template supporting compliant AI use aligned with Australian workplace laws and the Privacy Act 1988.



This resource is exclusive to AHRI members



Courses

Join AHRI to save 20%



Navigating the Future of HR: GenAI Integration Essentials

Explores practical applications of AI across HR functions, including recruitment, performance and workforce analytics.

AI & HR: What You Need to Know to Stay Compliant

Covers the legal, ethical and practical risks of AI in HR, including workplace, discrimination and privacy obligations.

Embedding Responsible AI: Shaping Workforce & Culture

Advanced course focused on HR's role in embedding AI into workforce strategy, planning and organisational culture.

Unlock your HR team's full potential

Invest in corporate training to strengthen organisational capability in responsible AI adoption and workforce transformation.

[Get in touch](#)



Webinars



Join AHRI to access these and other resources

AHRI Webinar Generative AI for HR

Apply generative AI across HR tasks to improve efficiency and support decision-making.



This resource is exclusive to AHRI members

AI in HR: From Insights to Impact

Turn AI insights into practical actions that support workforce and business outcomes.



This resource is exclusive to AHRI members

2026 Radar Check: What HR Needs to Know About the Year Ahead

Stay across key AI, workforce and regulatory trends shaping HR priorities.



This resource is exclusive to AHRI members

The State of Work: AI, Absence and Australia's Changing Workforce

Understand how AI is shaping workforce trends, including absence, engagement and changing work patterns.



This resource is exclusive to AHRI members



Podcasts

Available to all



Is AI creating a legal liability in your organisation?

Understand the legal risks of AI in HR decisions, including claims exposure and accountability.



Governing in the AI era with Shirley Chowdhary

Understand how AI is reshaping governance, accountability and risk, and what HR leaders need to navigate at a strategic and board level.



How to redesign work in the age of AI with Professor Sharon Parker

Explore how AI is reshaping roles, work design and organisational structures.



New truths about how we work with Kate Bravery

Understand how AI is changing productivity, decision-making and the way work gets done.



Navigating the evolving skills landscape with Ravin Jesuthasan

Learn how skills-based hiring and AI are reshaping workforce and job design.



Articles

Available to all



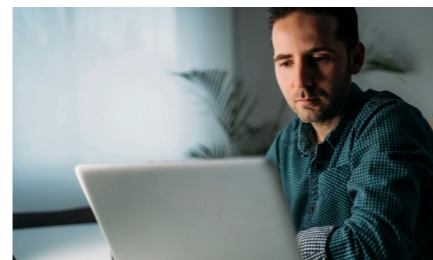
HR's AI Dilemmas



How can HR step out of the AI pressure cooker in 2026?



Could using AI too often make us less civil with our colleagues?



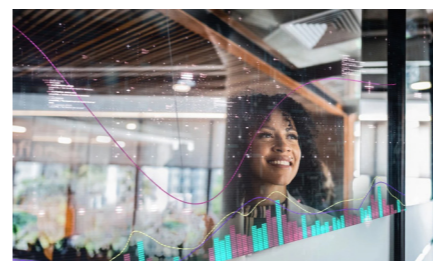
Around 1 in 4 employees are using AI tools without telling their managers



How can we protect our cognitive capacity at work?



ANZ bank's L&D lead shares his approach to protecting human-centric skills for the future



Case study: How KPMG has reshaped its strategic workforce planning approach in the age of AI



How Microsoft's HR team is using AI to save over 20,000 hours per year



How to communicate with your workforce about AI-related job losses



5 ways businesses are responding to the rise of AI-generated job applications



4 considerations to keep in mind when introducing new technology into your workforce



Join AHRI to access these and other resources



Research & Strategic Insights



HR - Radar Report -2026

Understand the economic, workforce and AI trends shaping HR priorities, with practical insights to help you anticipate change and position HR as a strategic driver of performance in 2026.



This resource is exclusive to AHRI members



AHRI – Work Outlook Report 2026 – Q1

Stay across shifting employment trends, hiring activity and skills demand, with insights into leadership capability gaps, wage pressures and the growing focus on AI capability.



This resource is exclusive to AHRI members



Managing the 5Rs Report - 2026

Explore how organisations are managing recruitment, retention, reskilling, reorganisation and redundancies simultaneously in response to economic uncertainty and rapid technological change.



This resource is exclusive to AHRI members



Capability Building & Support



Ask AHRI: Member Guidance

Access timely, evidence-based general guidance to support HR practitioners navigating AI and emerging workplace considerations.



This resource is exclusive to AHRI members

Ready to learn, lead and make an impact?

Join the trusted home for HR professionals

As an AHRI member, you'll gain access to all items in this toolkit, as well as:

- A range of practical tools and resources to solve real HR challenges
- Exclusive research, insights and thought leadership
- A vibrant community of HR peers
- Our highly valued webinars
- Special member pricing for courses and conferences
- Recognition and credibility through HR Certification.

Join AHRI now for 12 months of access.



Scan to
join today

